



WWW.SMITTYBILT.COM

## Installation Instructions

Tow Bar Kit  
Part # 87450

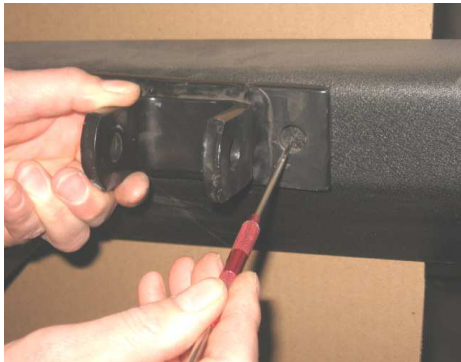
Please read instructions entirely before installing this product. It is recommended to have this product installed by an experienced shop/installer familiar with correct towing mounting areas and strength requirements.

Parts Included	Qty
Tow Bar	1
Bumper Bracket /Backing Plate	2 ea
D-Ring Mount Bracket	2
Pivot Bracket	2

Parts Included	Qty
Quick release Pin	2
1/2" x 1 3/4" Hex Bolt/Washer/Nut	4ea
1/2" x 3 1/2" Hex Bolt/Nut	2ea
D-Ring Mount Spacer	2

### Universal Bumper Mount Bracket

**Step 1:** Locate an adequate and rigid mounting area. Center the tow bar with the surface you will be mounting on. Spread the arms of the tow bar (at least 24" not over 34") Use the bumper brackets as a template to mark the hole locations. Mark and drill the holes out using a 1/2" drill bit. (Fig A, B) Torque to 80 ft. lbs.



(Fig A)



(Fig B)



(Fig C)

**Step 2:** Secure the brackets to mounting surface using the included 1/2" x 1 3/4" hardware (Fig C). Run bolts through brackets then through bumper (mounting surface) and then through included backing plates.

**Step 3:** Install pivot bracket onto ends of tow bar arms using the included 1/2" x 3 1/2" hardware. (Fig D) Tighten until nut is secure on bottom of swivel bracket. **Note:** Do not torque, tow bar should be able to slightly move. Attach pivot bracket to main bracket using the included pin bolts. (Fig E)



Check these bolts frequently to make sure they are not become loose. The coupler should be within 5 degrees level with the mounting point on vehicle being towed.

**Step 4:** After both arms are attached to the brackets, tighten the 4 nuts that hold the arms to the front. Torque to 30 ft. lbs. (Fig F)

**For Technical Support/Warranty Information please call 310-762-9944**

Smittybilt, 400 West Artesia Blvd, Compton, CA 90220



WWW.SMITTYBILT.COM

## Installation Instructions

Tow Bar Kit  
Part # 87450



(Fig D)



(Fig E)



(Fig F)

**Step 5:** Safety chains must be mounted to the vehicle towing and the vehicle being towed. Attach safety chains to tow bar arms using the included U-bolts and nuts. U-bolts mount from the outside and secured on the inside of each arm. The quick link “S” end of the chain goes towards the end that would attach to the vehicles. Cross the front chains under the coupler and connect to towing vehicle. Connect the chains to the vehicle being towed to the frame as close to the front of the vehicle as possible looping them also. Leave enough slack in order for turning and pivoting of tow bar. On some set-ups longer safety chains may need to be purchased separately from your local tow/hitch supplier.

**Step 6:** Attach a wiring harness from towing vehicle to towed vehicle so that the brake and turn signal lights work in conjunction together.

**Note:** If coupler feels loose on ball, it can be adjusted by turning the nut underneath. Coupler latch must be secured with included pin.

**Step 7:** Make sure all fasteners /bolts are secure and all correct connections made. Read and understand warning label below and vehicles manufacture towing rules and requirements. Always use caution when towing.

For Technical Support/Warranty Information please call 310-762-9944

Smittybilt, 400 West Artesia Blvd, Compton, CA 90220



WWW.SMITTYBILT.COM

## **Installation Instructions**

Tow Bar Kit  
Part # 87450



### **D-Ring Mount Bracket**

**Step 1:** Attach D-Ring mount brackets to the end of the tow bar arms using the included  $\frac{1}{2}$ " x  $3\frac{1}{2}$ " hardware. (Fig G) Tighten until nut is secure on bottom of swivel bracket. **Note:** Do not torque, tow bar arms should be able to slightly move.

**Step 2:** Attach tow bar to d-ring mounts on your bumper by placing spacer in d-ring then placing clamp over d-ring and inserting included pin bolts. (Fig I, J)

**Note:** Make sure your d-ring mounts have been tested and are rated to be used as a towing point.

**Step 3:** Follow steps 4-7 above for completion of installation.

**For Technical Support/Warranty Information please call 310-762-9944**

**Smittybilt, 400 West Artesia Blvd, Compton, CA 90220**





WWW.SMITTYBILT.COM

**Installation Instructions**  
**Tow Bar Kit**  
**Part # 87450**



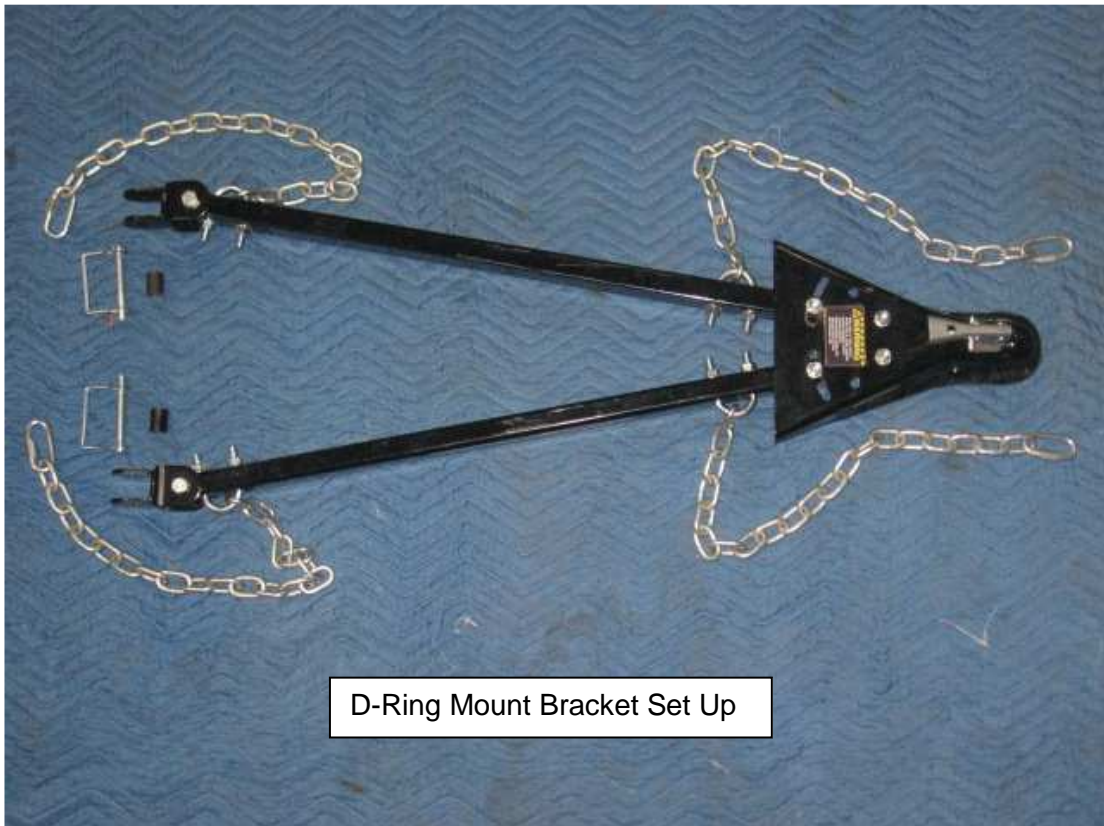
(Fig I)



(Fig J)



(Fig K)



D-Ring Mount Bracket Set Up

Note: Some actual parts may vary slightly from what is pictured. Pictures are for your reference and guidance.

**For Technical Support/Warranty Information please call 310-762-9944**

**Smittybilt, 400 West Artesia Blvd, Compton, CA 90220**



WWW.SMITTYBILT.COM

**Installation Instructions**  
Tow Bar Kit  
Part # 87450



- Weight TOTAL of vehicle towed can not exceed 5,000Lbs
- Towing vehicle must weigh more than vehicle being towed
- Remove tow bar when not in use
- Do not tow with passengers in vehicle being towed
- Towed vehicle steering must be free to turn, do not tow vehicles that have drivetrain, suspension or steering damage
- Do not exceed 45 mph
- Read manual and make sure tow bar is installed properly before each use failure to do so can cause serious bodily and/or property damage
- Towed vehicle should have operational brake and turn signal lighting. If not ,temporary lighting should be used
- Caution; towing a vehicle will increase the time and distance it takes stop. Allow more time for stopping and increase distance between vehicles while on the road.
- Use caution when making turns. Be aware of vehicle being towed
- Always follow vehicles owners manual for towing recommendations and rules
- Verify all connections from before and after each use
- Do not exceed the lowest rating of any part of the towing platform/system.
- Only use a 2" ball that is rated for at least 5,000Lbs
- Always connect safety chains properly
- Make sure vehicle being towed tires are fully inflated
- Never drive towed vehicle with tow bar still attached
- At anytime you feel unstable or abnormal swaying, immediately pull over safely and inspect setup. Decreasing speed may decrease instability, if it persists discontinue towing.

**For Technical Support/Warranty Information please call 310-762-9944**

**Smittybilt, 400 West Artesia Blvd, Compton, CA 90220**



WWW.SMITTYBILT.COM

**Installation Instructions**  
**Tow Bar Kit**  
**Part # 87450**

**Limited Warranties**

Smittybilt's products are covered under the following limited warranties only. Note that the duration of the limited warranty differs according to the material and finish of the product purchased. Subject to the duration and conditions of the limited warranty stated below, Smittybilt warrants to the original retail purchaser that its products are free from defects in material and workmanship. All other warranties and representations express or implied, are hereby disclaimed, including fitness for merchantability and buyer's intended use or purpose. All parts are sold "AS IS" except for the limited warranties granted herein. Buyer assumes all risks as to the selection, suitability and performance of all goods and products selected. This limited warranty does not cover damage or impairment in any part due to misuse, improper installation, accident or contact with on-road or off-road hazards, product modification, improper or inadequate cleaning and/or maintenance. Smittybilt is not responsible for items damaged during shipping. This warranty is not transferable from the original buyer. For the original Buyer to be eligible for the limited warranty coverage, the Buyer must provide proof of purchase. Smittybilt strongly recommends returning the warranty registration card.

Customer's remedy hereunder shall be limited only to repair or replacement (at Smittybilt's option) of any defective part(s) returned to Smittybilt at customer's expense. The determination of whether or not a returned part is defective or subject to coverage under the limited warranties stated herein shall be made at Smittybilt's sole discretion.

**Limited Five (5) Year / 50,000 Mile Pro-Rata Warranty (whichever occurs first) on Dual-Stage Powder Coating Products -**

Smittybilt dual-stage powder coated products carry the foregoing limited repair or replacement warranty for a period of (5) years or 50,000 miles (whichever occurs first) from date of purchase against workmanship and defects in the material, provided that any claim submitted after (2.5) years from date of purchase shall, if accepted, be satisfied by Smittybilt offering customer a credit on the purchase of a replacement product equal to fifty percent (50%) of customer's initial purchase price.

To assure product quality, Smittybilt reserves the right to change product design, material, specification and finishes without prior notice to customers. This limited warranty gives you specific legal rights and you may also have other rights, which may vary from state to state. Some states do not allow limitations on how long an implied warranty lasts, so the above limitations may not apply as to you. Also, some states do not allow the exclusion or limitation of incidental or consequential damages, so the above limitations or exclusions may not apply to you. Smittybilt reserves the right to discontinue product lines and substitute products, or provide other remedies than those listed in this limited warranty for those discontinued products.

**Warning**

Rollover and other types of vehicle accidents may result in serious injury or death to you, your passengers and others sharing the road. Smittybilt accessories are decorative and are not intended to reduce or avoid injury or damage in the event of an accident. The weight and location of Smittybilt accessories may affect your vehicles' handling, stability and performance, creating an increased risk of accident or rollover. Before installing any accessory, check state laws and assure that the accessory will not obscure any lights or interfere with proper operation on your vehicle's safety equipment. Consult your owner's manual and the Smittybilt instructions, or additional safety information. Smittybilt products, nor the warnings contained herein, are not a substitute for your safe driving. Don't drink and drive, always use seat belts and don't drive faster than conditions permit.

**For Technical Support/Warranty Information please call 310-762-9944**

**Smittybilt, 400 West Artesia Blvd, Compton, CA 90220**