

INSTALLATION INSTRUCTIONS

2007 – 2017 JEEP JK WRANGLER

Revision J



Allow approximately 2 hours for installation

TOOLS REQUIRED FOR 2007-2008

- Phillips head screw driver
- Drill motor and a 1/4" diameter drill bit
- 8mm socket and 3/8" socket
- T-20 TORX bit

TOOLS REQUIRED FOR 2009-2017

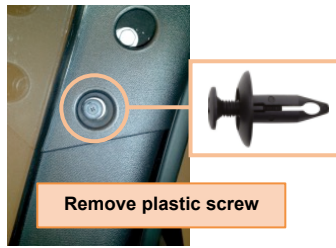
- Phillips head screw driver
- 10mm & 12mm sockets
- T-20 & T-25 TORX bit
- Flashlight

AFTER INSTALLATION, YOU MUST START THE ENGINE TO ACTIVATE THE SYSTEM!!

- Remove the Freedom/Soft top for easier access during installation.
- Loosen visor screws using T-20 TORX bit.
- Remove small plastic screw from A-pillar then pull off plastic trim.
- Remove existing plastic windshield header cover by swinging the visors out of the way and pulling the plastic windshield header straight out until all 4 clips pop out of windshield frame.
- Loosen the driver's side windshield "A" pillar and visor using the T-20 TORX bit to loosen the 2 screws.



Do not remove the screws; only loosen them!



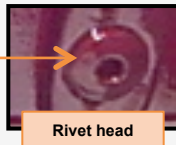
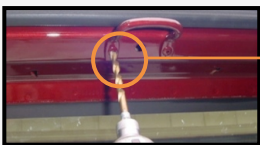
Remove plastic screw



Header clip holes

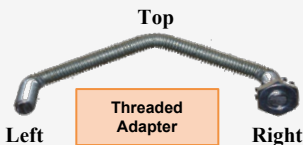
2007 – 2008 : SWITCH PANEL INSTALLATION

Use a 1/4" diameter drill to remove existing footman loop from windshield frame by drilling off the pop rivets holding the loop on. **Be careful not to drill into loop or windshield frame! Only remove the head of the rivets!** Now pull the footman loop off and push the rivet into the windshield frame to clear the holes for the sPOD's threaded adapter.



Rivet head

Now feed the provided threaded adapter bracket through the windshield rivet hole on the **right**, then bring it back through the **left** hole. Notice that one **nut comes pre-installed**, leave it on while feeding it through so as not to drop it inside the windshield frame.



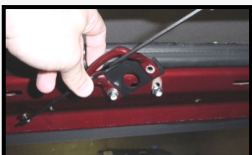
Threaded Adapter



May have to ream hole open



Now you are ready to attach the sPOD switch bezel bracket and footman loop to the windshield frame as shown below. Align the bracket and footman loop over the left hole and install a **washer** and the **10-32** nut on **left** side. Then remove the right hand side nut and install the **washer** and **10-32** nut on right hand side.



Tighten using a 3/8" socket or nut driver.

DO NOT OVERTIGHTEN

AFTER INSTALLATION, YOU MUST START THE ENGINE TO ACTIVATE THE SYSTEM!!

2009 – 2017 : SWITCH PANEL INSTALLATION

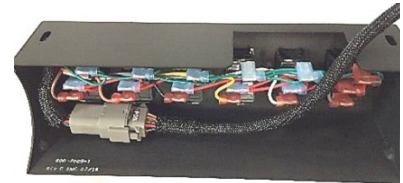
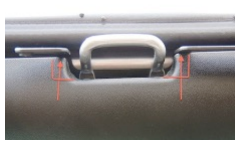
Use a T-25 TORX bit to remove existing footman loop from windshield frame.

Align the bezel bracket over the footman loop. Reattach the assembly back onto the windshield frame with the bezel bracket attached on TOP of the footman loop as shown below.



Keep this hole clear! It is used for the plastic windshield header alignment stud.

- Re-install the plastic header and snap into place. Tuck the switch panel harness behind the plastic header.



On some plastic pieces, you may have to trim a small amount on both sides to clear the bracket. Red lines show where you may need to cut.

- Attach switch bezel assembly to the bracket using the 10-32 Phillips head screws that have been provided. Do not tighten until bezel fits snug against plastic windshield cove.



- Guide wire harness through all the plastics going toward the driver's side by lifting & tucking the harness behind the plastic as you go. Feed the harness down behind the plastic vertical pillar & out the side opening for now.



Sun visor / left side vertical A pillar



Wire harness

- Next, remove the plastic cover on the driver's side between the door and the side of the dash for access to the firewall. Remove by just snapping it off.



Use a small screwdriver to pry out plastic



Wire harness Goes through

AFTER INSTALLATION, YOU MUST START THE ENGINE TO ACTIVATE THE SYSTEM!!

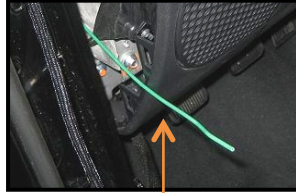
STANDARD TRANSMISSIONS



Original rubber plug



Use this grommet on upper right side of brake booster



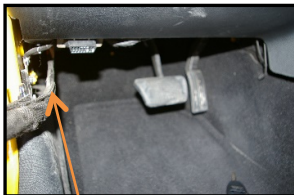
Fish line



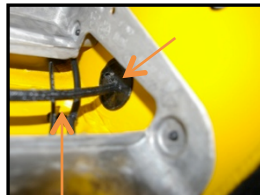
Form a hook on the end of the fish line and wrap the white connector with a little electrical tape.

AUTOMATIC TRANSMISSIONS

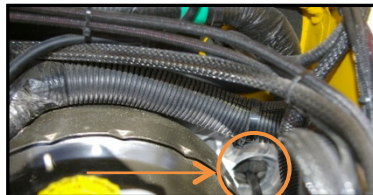
Use the foam hole on lower right side of brake booster. (Use the flashlight)



Look up into upper left side of firewall for the harness you just passed through



Use a screwdriver to make a hole in foam to pass through firewall. Push connector through

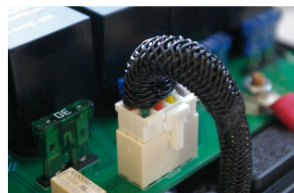
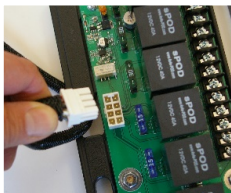


Look on right side of brake booster for pass through



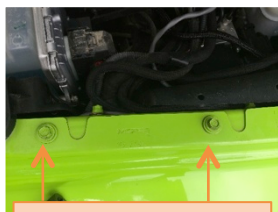
Pull connector through

Do this next step before mounting plate to fender!



Run connector up through opening in plastic

- On driver's side fender, locate two bolts (next to the ECU) as shown below.

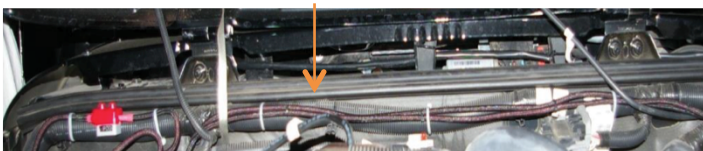


Remove these two bolts



Place plate over holes. Install both bolts and tighten.

- Snugly route power leads along firewall over to battery using supplied cable ties to secure.

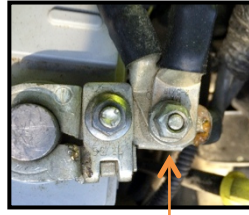


AFTER INSTALLATION, YOU MUST START THE ENGINE TO ACTIVATE THE SYSTEM!!

- Connect **Positive** and **Negative** wire to battery terminals. Use supplied cable ties to secure all cables. For 2012-2017 models, use the supplied 5mm nut for the Negative battery cable.



Positive side – 10mm socket



Negative side – 12mm socket



Auto reset circuit breaker

1. Attach your accessories here.
SWx is the **Positive** and GND is the negative terminals.
2. Negative battery terminal.
3. Positive battery terminal.
4. Switch panel harness input.
5. This jumper is used to defeat the low voltage detection.
6. Low voltage detection circuit. [Once the system detects a low voltage (11.6VDC or lower) after 2 minutes, the system will shut down. Turn off all switches on sPOD and start the vehicle to enable the sPOD again.]
7. Harness/Low voltage detection circuit fuse.
8. Accessory fuses. Use the appropriate rated fuse for the accessory you are attaching (max. 30 AMPs).
9. Relays that are removable.

Whenever possible, keep your engine running when powering electrical accessories!

NOTE: If you ordered the dual lit switch option, this is how you turn the lower pilot lights on. Push once to turn on, push again to turn off.



NOTES AND WARNINGS

- Never reverse polarity on battery cables.
- NEVER chassis ground the sPOD's negative battery cable. Always attach both positive and negative accessory wires to the sPOD.
- Although the sPOD system is weather proof, do not submerge in water. Do not spray cleaner onto unit or into any openings. Always use a soft towel or cloth for cleaning purposes and or compressed air to dry.
- System will shut down when voltage drops to 11.2 V (2 minute delay) and requires 12.8 V to reinitialize (start engine).
- Do not tamper, open or remove any factory-installed components; this will void the warranty.
- Do not replace 2 amp or the 5 amp fuse with any other rated fuse; this will void the warranty.
- Do not attach any additional electrical accessories to the battery terminals on the Source; this will void the warranty.