

## Chevrolet Silverado 1500 2007-18 Rear Bumper

Thank you for choosing Rough Country for all your vehicle needs.

Please read instructions before beginning installation. Check the kit hardware against the kit contents shown below. Be sure you have all needed parts and know where they go.

If question exist, please call us @1-800-222-7023. We will be happy to answer any questions concerning the design, function, and correct use of our products.

**▲ NOTICE** Rough Country LED lights are for off-road use only.

### KIT CONTENTS:

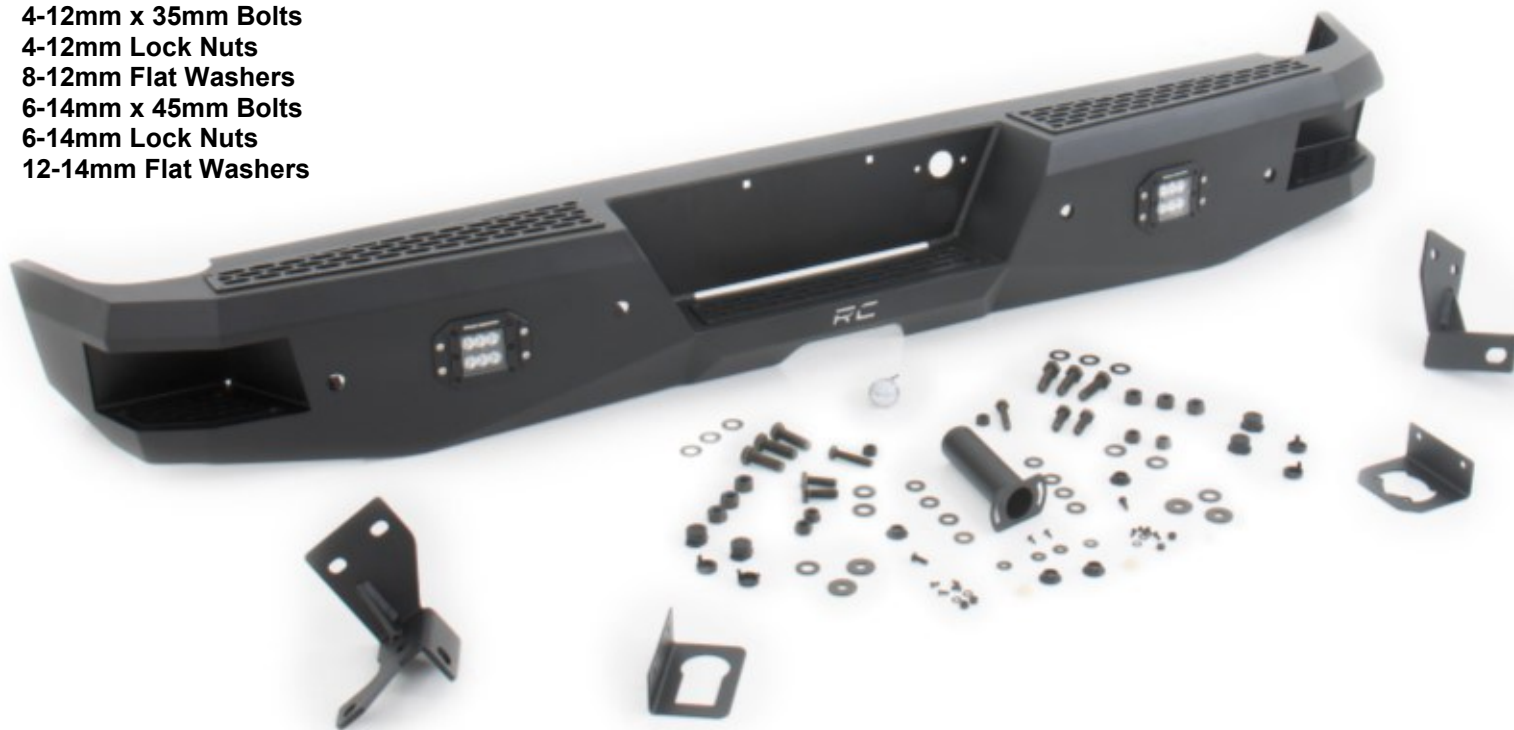
- 1-Rear Bumper
- 4- 2" Flush Mount LED

### HARDWARE INCLUDED:

- 8-4mm Allen head bolts
- 2-6mm Allen Head bolts
- 4-6mm Flat Washers (Small OD)
- 4-6mm Flat Washers (Large OD)
- 2-6mm x 16mm Bolts
- 4-6mm Lock Nuts
- 2-10mm x 50mm Bolts
- 2-10mm Lock Nuts
- 4-10mm Flat Washers
- 4-12mm x 35mm Bolts
- 4-12mm Lock Nuts
- 8-12mm Flat Washers
- 6-14mm x 45mm Bolts
- 6-14mm Lock Nuts
- 12-14mm Flat Washers

### TOOLS NEEDED:

- Pry Tool/Flat Head Screwdriver
- 15mm Socket/Wrench
- 16mm Socket/Wench
- 18mm Socket/Wrench
- 19mm Socket/Wrench

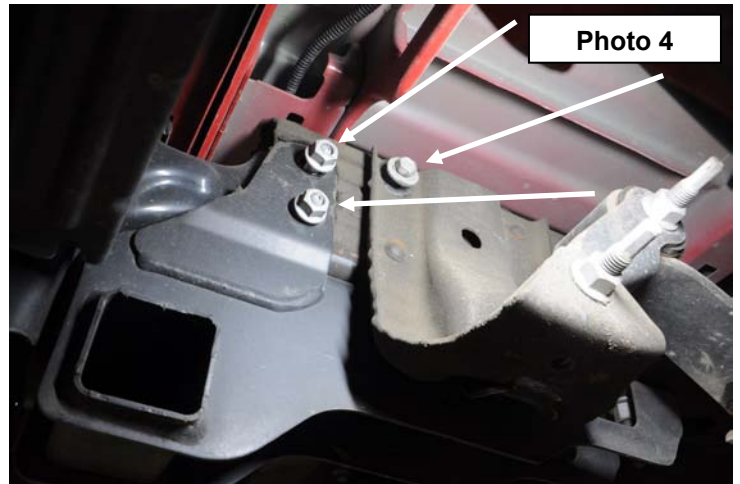


## INSTALLATION INSTRUCTIONS

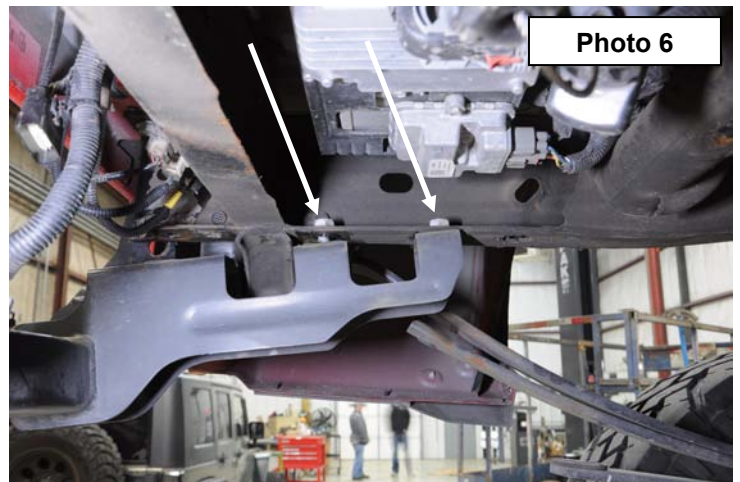
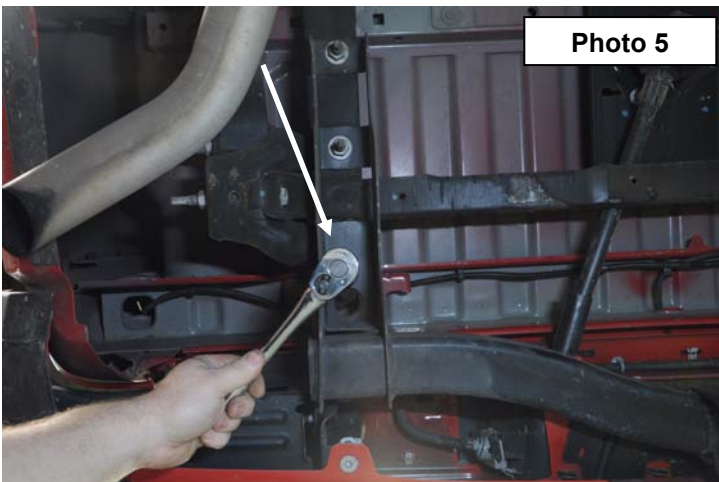
1. Place the vehicle in park.
2. Unplug the trailing wiring harness from bumper. Note spare tire was removed for a better view. **See Photo 1.**
3. Unplug the license plate lights at connector and any other wiring leading to rear bumper. **See Photo 2.**



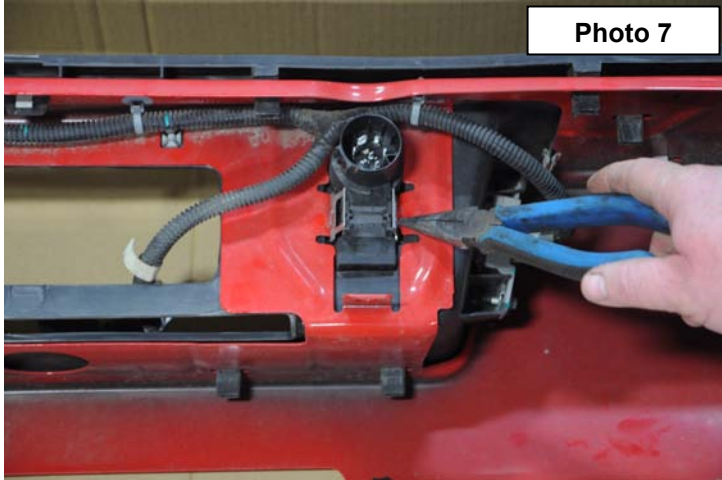
4. Using a 13mm wrench remove the two bolts attaching the back side of bumper to hitch. **See Photo 3.**
5. Using a 15mm and 18mm remove bolts holding bumper to frame on both sides. **See Photo 4.**



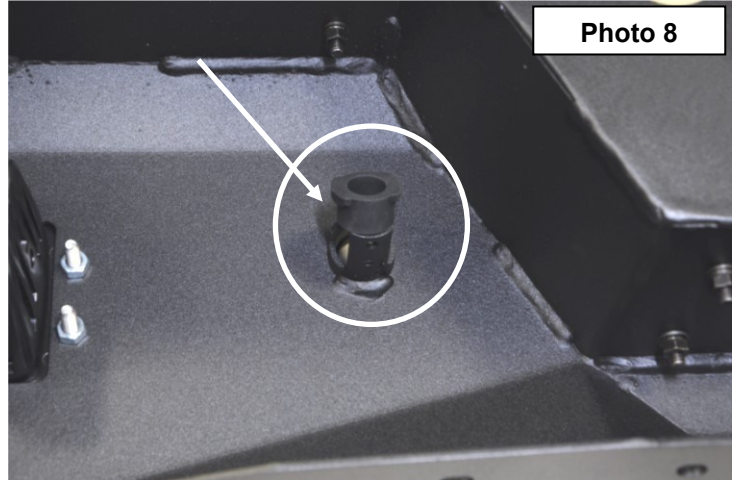
6. Using a 21mm socket remove the bolt as shown from hitch. **See Photo 5.**
7. Loosen the other four hitch bolts (2 per side) to allow bumper to drop down below bed. **See Photo 6.** Roll bumper down and remove.



8. After stock bumper is off remove the trailer wiring connector from bumper by pressing on the two clips. Retighten the four hitch bolts. **See Photo 7.**
9. Transfer the factory proximity sensors from the stock bumper to the new bumper and install the proximity sensor using the supplied 4mm allen head bolts.
10. If not factory equipped, use the supplied rubber plugs and retainer in the locations on the new bumper. **See Photo 8 & 9.**

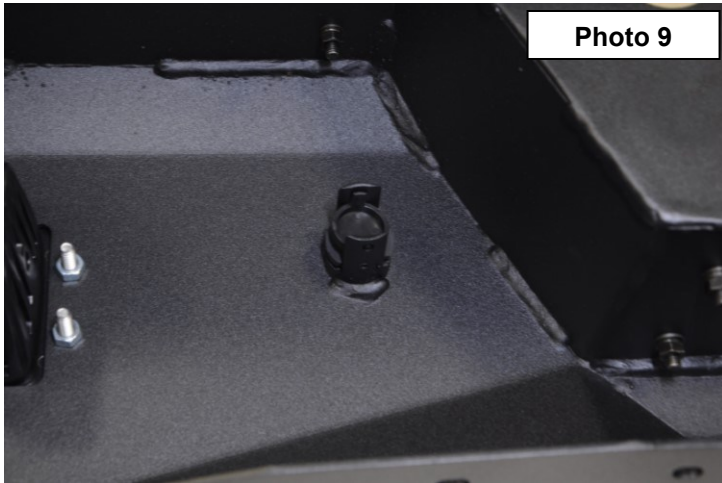


**Photo 7**

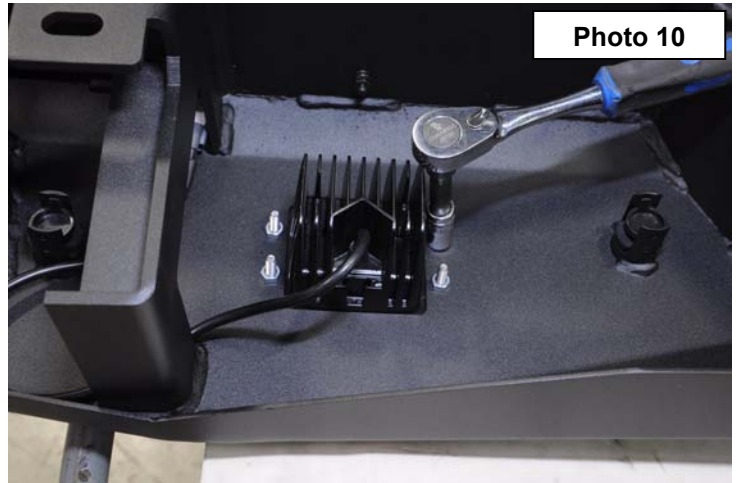


**Photo 8**

11. Install flush mount lights using a 4mm allen wrench and a 10mm socket. **See Photo 10.**

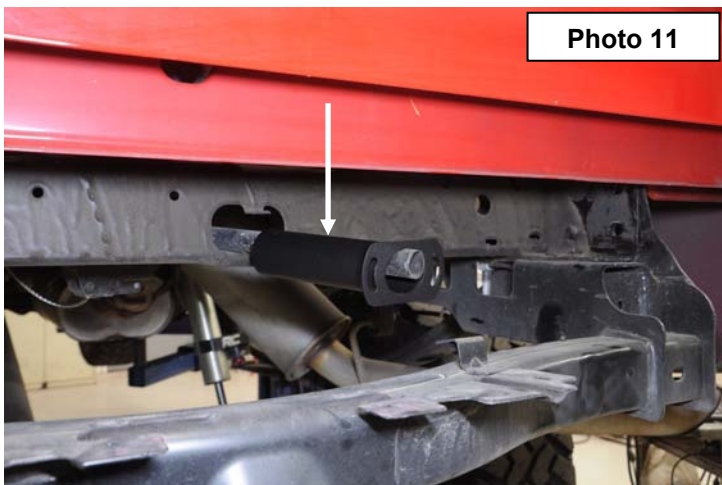


**Photo 9**

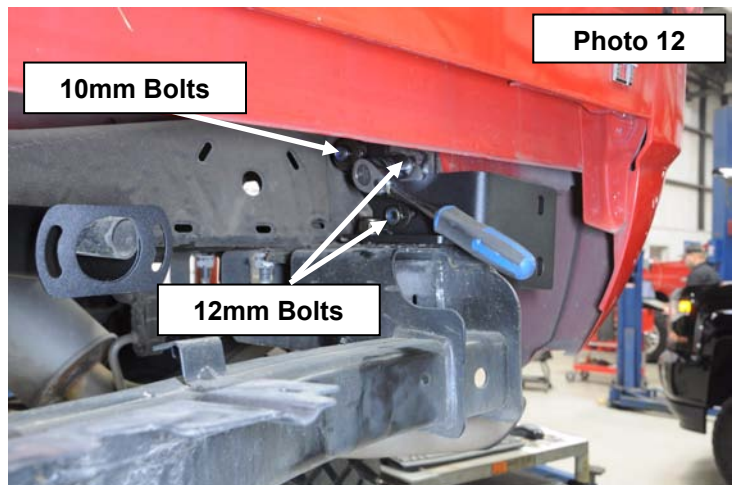


**Photo 10**

12. Install spare tire guide tube over the plastic tube on truck. **See Photo 11.**
13. Install bumper brackets using the supplied 10mm and 12mm bolts as shown. **See Photo 12.** Make sure the bracket is extended all the way to the rear and use a 17mm, 19mm, 21mm and 22mm wrench and socket to tighten.

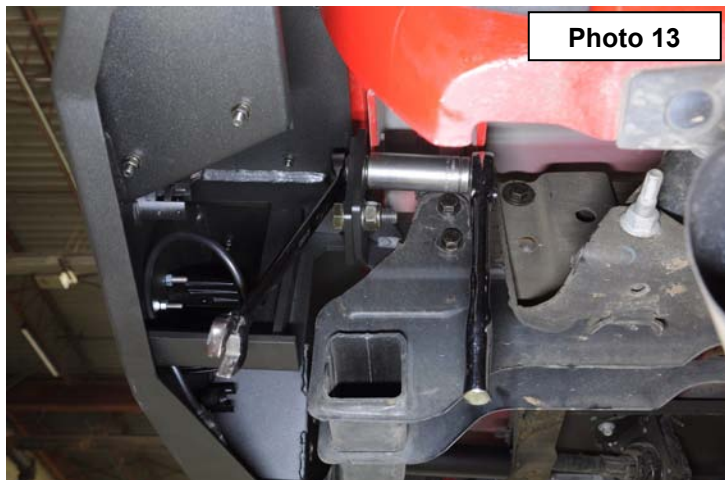


**Photo 11**

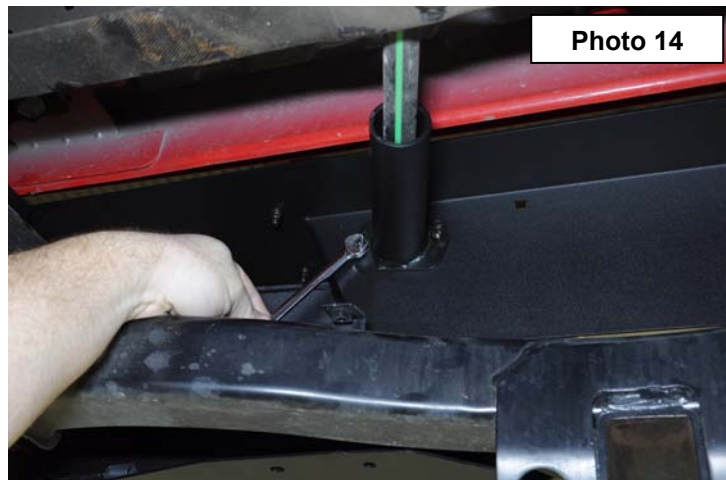


**Photo 12**

14. Install bumper using the four supplied 14mm x 45mm bolts, flat washers and lock nuts taking care not to contact the body with the bumper. Tighten bolts using 21mm and a 22mm wrench and socket. **See Photo 13.**
15. Install spare tire guide tube onto bumper with supplied 6mm Allen head bolts, small OD flat washers and lock nuts. **See Photo 14.** Use a 10mm wrenches to tighten. Make sure inside of tube is even with the hole in bumper.

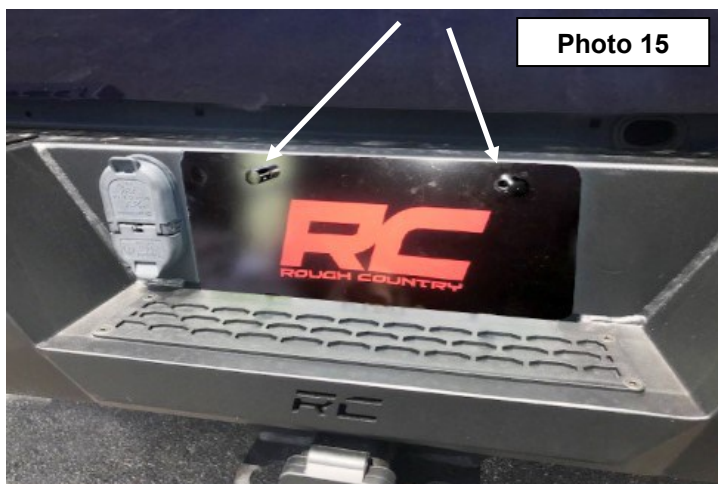


**Photo 13**

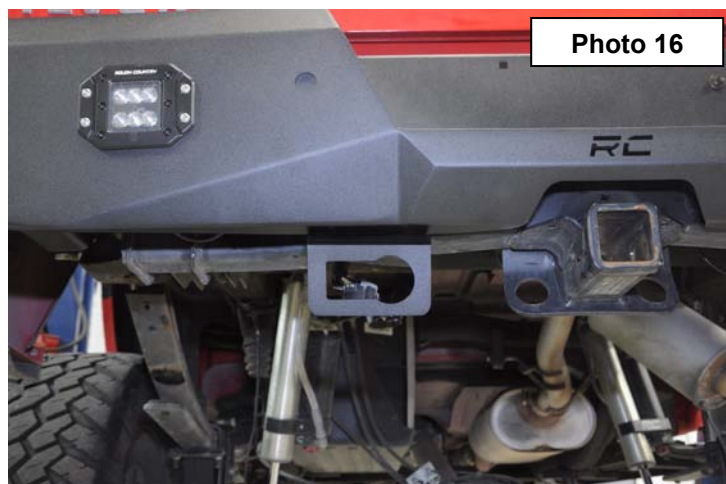


**Photo 14**

16. Install supplied LED license plate marker lights and license plate. **See Photo 15.** These lights will need to be spliced into the existing license plate wiring in the harness.
17. Unclip trailer wiring harness from frame. This is done for slack. Install new trailer plug bracket and install plug. Install the plug bracket using the supplied 6mm x 16mm bolts, nuts and large OD flat washers. **See Photo 16.** Reinstall the trailer connection in the bumper and plug in the harnesses that were unplugged for the trailer connection, license plate harness and proximity sensors if equipped.



**Photo 15**



**Photo 16**

By purchasing any item sold by Rough Country, LLC, the buyer expressly warrants that he/she is in compliance with all applicable Federal, State, and Local laws and regulations regarding the purchase, ownership, and use of the item. It shall be the buyers responsibility to comply with all Federal, State and Local laws governing the sales of any items listed, illustrated or sold. The buyer expressly agrees to indemnify and hold harmless Rough Country, LLC for all claims resulting directly or indirectly from the purchase, ownership, or use of the items.

